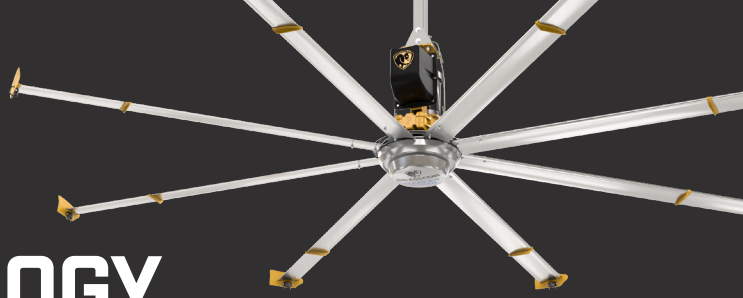
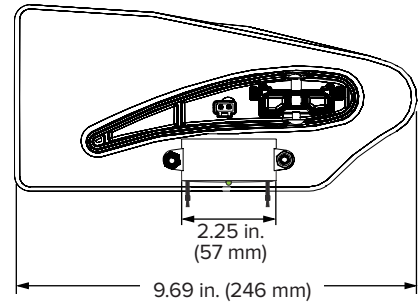
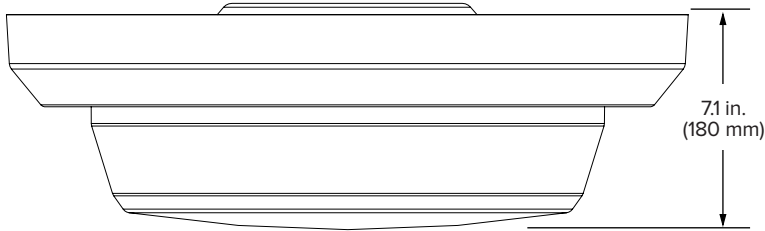


POWERFOIL[®] X3.0 WITH ION TECHNOLOGY



YOUR FACILITY'S BEST DEFENSE AGAINST AIRBORNE PATHOGENS


Big Ass Fans' innovative Clean Air System is a full-service, facility-wide air quality solution that kills up to 99.99% of SARS-CoV-2 (causes COVID-19) and other airborne pathogens.

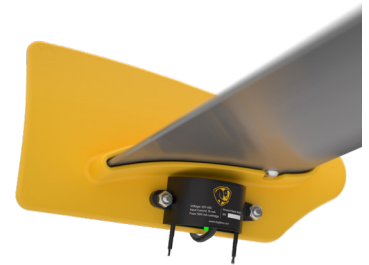


Technical Specifications¹

Compatible Fan	Input Power	Ionization Output	Ionizer Wattage	Max Fan Wattage	Ordering Information
Powerfoil X3.0	12 VDC, 50/60 Hz	Needlepoint brush Non-ozone producing	<1 W	379 W	S78

Construction Features¹

Housing and Bracket	Operation	Environment	Certifications
Ionizer made from durable and lightweight ABS with potted electronics Secured to winglet for maximum ion distribution	Indicator LED illuminates when ions are produced	Indoor use only	 <ul style="list-style-type: none"> UL 867 UL2998 UL 507 CSA C22.2 No. 113



¹ See the Powerfoil X3.0 fan cut sheet for complete fan features and specifications.

Lead times may vary.
See full fan warranty for coverage information.



**CLEAN AIR
SYSTEM**

USA
BIGASSFANS.COM
877-244-3267

CANADA
BIGASSFANS.COM
844-924-4277

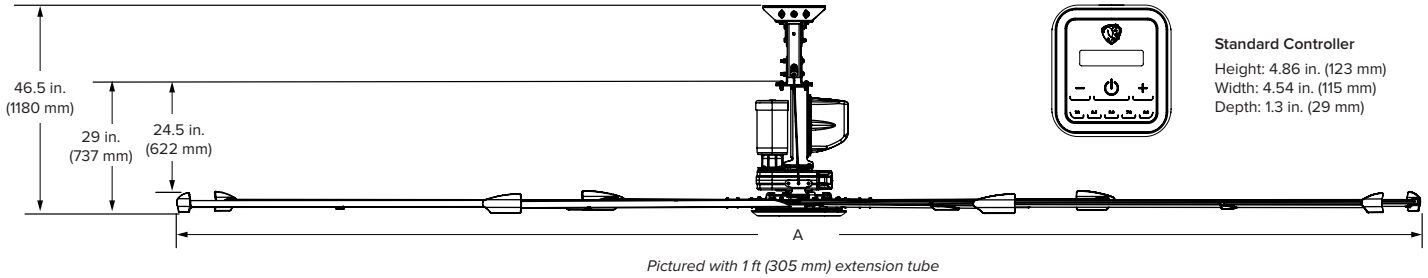
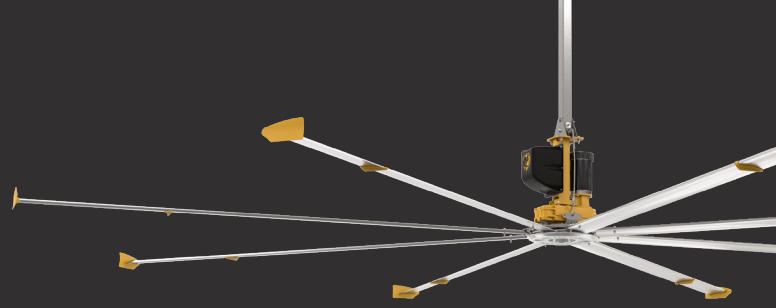
AUSTRALIA
BIGASSFANS.COM/AU
1300 244 277

SINGAPORE
BIGASSFANS.COM/SG
65 6709 8500

MALAYSIA
BIGASSFANS.COM/SG
603 5565 0888

POWERFOIL[®] X3.0

IT'S BIG. IT'S BAD. IT MOVES A TON OF AIR.



Technical Specifications

Fan	Diameter (A)	Weight ¹	Max Speed	Input Power and Required Breaker	Motor Horsepower	Airfoil Clearances	Max Operating Temperature
PFX3-12	12 ft (3.6 m)	245 lb (111 kg)	139 RPM	200–240 VAC, 50/60 Hz, 1 Φ, 30 A 200–240 VAC, 50/60 Hz, 3 Φ, 20 A 400–480 VAC, 50/60 Hz, 3 Φ, 10 A 575–600 VAC, 50/60 Hz, 3 Φ, 10 A	1.5 hp (1.1 kW)	2 ft (0.6 m) on sides 5 ft (1.5 m) below ceiling	122°F (50°C)
PFX3-14	14 ft (4.3 m)	254 lb (115 kg)	118 RPM			2.0 hp (1.5 kW)	
PFX3-16	16 ft (4.9 m)	264 lb (120 kg)	99 RPM		2 ft (0.6 m) on sides 7 ft (2.1 m) below ceiling		
PFX3-18	18 ft (5.5 m)	281 lb (127 kg)	88 RPM				
PFX3-20	20 ft (6.1 m)	290 lb (132 kg)	78 RPM				
PFX3-24	24 ft (7.3 m)	347 lb (157 kg)	65 RPM				

Construction Features

Airfoils	Motor and Drive	Onboard VFD and Functional Platform	Certifications	Mounting	Multi-Point Safety ³	Colors
Eight patented Powerfoil airfoils (mill finish) Powerfoil winglets eliminate wind noise (safety yellow)	NitroSeal™ Drive gearbox (STÖBER); fully sealed drive enclosure resists corrosion and reduced heat buildup for longer life. Rated IP43; optional IP55 motor for harsh environments	Housed in an ABS/PVC-based enclosure with built-in heatsink; virtually eliminates RFI and EMI noise Functional platform integrates lights, security cameras, speakers, or other devices	UL Standard 507 and CSA Standard 22.2 No. 113 Intertek CE	Standard upper mount installs to I-beams and bar joists Optional kits allow for mounting to solid beams and purlins	Double safety cable system, airfoil retainers, hub safety clips, Grade 8 hardware, fire relay, guy wires, and airfoil restraint system	Standard colors are silver and yellow. Individualize your fan with one of our classic color upgrades, or work with our design consultants to create a shade that's all your own.

Controls

Standard Controller	Integrations	BAFCon Upgrade ⁴
Made from durable UV-resistant materials Rated IP55 Intuitive touchscreen interface On/Off and variable speed control Password protection Powered by fan drive	Building automation systems (Modbus-RTU protocol or BACnet adapter) 0–10 V control Fire suppression systems	Integrated SmartSense technology automatically adjusts fan speed based on seasonal conditions 24-bit color LCD display with resistive touchscreen protected in sleek metal and ABS housing Powered by fan drive

Standard Controller



Lead times may vary.
See full warranty for coverage information.

¹ Weight does not include mount or extension tube.

² Measure the distance from the tip of the winglet to the ceiling or major obstruction.

³ Airfoil restraint system comes standard on 20–24 ft (6–7.3 m) fans and is an option for smaller diameter fans. The fire relay must be wired during install if required by local code. Guy wires are included with fans that have extension tubes 4 ft (1.2 m) or longer.

⁴ Optional upgrade available; ships separately.



USA
BIGASSFANS.COM
877-244-3267

CANADA
BIGASSFANS.COM
844-924-4277

AUSTRALIA
BIGASSFANS.COM/AU
1300 244 277

SINGAPORE
BIGASSFANS.COM/SG
65 6709 8500

MALAYSIA
BIGASSFANS.COM/SG
603 5565 0888